



Development and Delivery of
Livelihood-Based e-Service for ASEAN Women



Course Information

E-SERVICE DEVELOPMENT WORKSHOP FOR ASEAN WOMEN

September 22 (Mon.) – October 1 (Wed.), 2014

Seoul, Korea



SOOKMYUNG
WOMEN'S UNIVERSITY



5F, Centennial Hall, Cheongpa-ro 47-gil 100, Yongsan-gu, Seoul, KOREA 140-742
TEL. +82-2-2077-7162 | FAX. +82-2-710-9351 | E-MAIL. apwinc@sm.ac.kr



TABLE OF CONTENTS

I. Introduction

1. About the Workshop
2. Tentative Schedule

II. Program Contents

1. Workshop Components
2. Study Visit

III. Guidelines for Action Plan

1. Progress Chart of Action Plan Workshop
2. Tasks for Action Plan Preparation

IV. Accommodation

V. Transportation

1. From Incheon Airport to Ramada Hotel & Suite, Seoul Namdaemun
2. From the Subway Station 'City Hall' to the Ramada Hotel & Suite, Seoul Namdaemun

VI. Expenses and Allowance

VII. Personal Belongings and Checklist

VIII. General Information

1. Training Institution
2. About Korea and City Seoul

IX. Contact Information

Annex. List of Participants



I. INTRODUCTION

1. About the Workshop

- **Course Title:** e-Service Development Workshop for ASEAN Women
- **Duration:** September 22 (Mon.) – October 1 (Wed.), 2014 (10 days)
(*Workshop Period: Sept.23 to Sept.30)
- **Venue:** Centennial Hall at Sookmyung Women's University, Seoul, Korea
- **Number of Participants:** 20 (2 people from 10 ASEAN member states)
 - Academic Background: BA degree or higher education degree in the relevant field.
 - Current occupation: Public officials or professionals with work experience mainly engaged in the field of developing, operating, managing online public service for at least five years.
 - Linguistic ability: Good command of both written and spoken English
 - Computer ability: Good knowledge of computer skills (Internet, MS Office, Social Network Service)
- **Language:** English
- **Workshop Organizer:** Asia Pacific Women's Information Network Center (APWINC), Sookmyung Women's University (SMU)
- **Accommodation:** Ramada Hotel & Suites, Seoul Namdaemun
- **Workshop Objectives:**
 - To select a field of e-Service development for ASEAN Women based on the result from the Preliminary Research
 - To produce a plan for the development/ improvement, and delivery of e-Service toolkit to be disseminated across ASEAN member states
 - To propose an e-Service development strategy tailored to the specific areas of ASEAN women's concerns.



Development and Delivery of Livelihood-Based e-Service for ASEAN Women



2. Tentative Schedule

Date/Time	Program	Lecturer/Moderator
Sep.22(Mon.)	Arrival/Move to Hotel and Check In	
Sep.23(Tue.)	Opening Ceremony/Lecture/Country Report Presentation	
09:00-09:30	Move to Sookmyung Women's University(SMU)	
09:30-10:30	Opening Ceremony	
10:30-11:00	Workshop Orientation	
11:00-12:00	Campus Tour	
12:00-13:00	Welcome Luncheon	
13:00-15:00	[Lecture 1] Korea's e-Government Development and Government 3.0	Mr. Kim, Sang-Jin (Ministry of Security and Public Administration)
15:00-17:30	Country Report Presentation by Public Official Participants (15mins/country)	
Sep.24(Wed.)	Preliminary Research Presentation/Lecture/Local Research Presentation	
09:00-09:30	Move to SMU	
09:30-11:30	[Lecture 2] Presentation of Preliminary Research	Prof. Young-Kyu Moh (Sookmyung Women's University)
11:30-13:00	Lunch	
13:00-15:00	[Lecture 3] Guideline to e-Service Development by using the UN e-Government Index	Ms. Lira Choi (Sookmyung Women's University)
15:00-17:30	Presentation of Local Research : Session1 (30mins/country)	
Sep.25 (Thu.)	Local Research Presentation/Lecture/Action Plan	
09:00-09:30	Move to SMU	
09:30-12:00	Presentation of Local Research : Session2 (30mins/country)	
12:00-13:30	Lunch	
13:30-15:30	[Lecture 4] Best Practice of Korea's e-Service : Health Care	Dr. Young Chul Chung (Korea Institute for Health and Social Affairs)
15:30-16:00	[Action Plan] Orientation & Grouping	



Development and Delivery of Livelihood-Based e-Service for ASEAN Women



16:00-17:00	[Action Plan] Core Components for ASEAN e-Service Development : Group Discussion	
17:00-18:00	[Action Plan] Core Components for ASEAN e-Service Development : Group Presentation (20mins/Group)	
Sep.26(Fri.)	Lecture/Action Plan	
09:00-09:30	Move to SMU	
09:30-12:00	[Action Plan] Discussion by Country	
12:00-13:30	Lunch	
13:30-16:30	[Lecture 5] e-Service Practice with WordPress : Session 1	Mr. Hwang Ho Yean (CEO, WordPress Market)
16:30-18:00	[Action Plan] Discussion by Country	
Sep.27(Sat.)	City Tour	
10:30-	[City Tour] Seoul City Tour Bus (Last Bus 19:00)	
Sep.28(Sun.)	No Official Schedule	
Sep.29(Mon.)	Lecture/Study Visit/Action Plan	
07:30-09:00	Move to Gyeonggi Women's Development Center(GWDC)	
9:00-11:00	[Lecture 6] Best Practice of Korea's e-Service : Women's Economic Participation	Dr. Jo Jung Ah (GWDC)
11:00-11:30	[Study Visit] Gyeonggi Women's Development Center(GWDC)	
11:30-13:30	Lunch	
13:30-15:30	[Lecture 7] e-Service Practice with WordPress : Session 2	Mr. Hwang Ho Yean (CEO, WordPress Market)
15:30-17:00	[Action Plan] Final Review	
17:30-18:30	Farewell Dinner	Korea House
18:30-19:30	[Culture Experience] Korean Traditional Art Performance	Korea House
Sep.30(Tue.)	Action Plan/Closing Ceremony	
09:00-09:30	Move to SMU	
9:30-12:00	[Action Plan] Action Plan Presentation by Country (15mins/Country)	
12:00-13:30	Lunch	
13:30-14:30	Closing Ceremony	
Oct.1(Wed.)	Check out from the Hotel/Move to Incheon Airport	



II. PROGRAM CONTENTS

1. Workshop Components

Lectures (Theories, Case Studies, Study Visit, ICT Practice)	Korea's e-Government Development and Government 3.0
	Presentation of Preliminary Research
	Guideline to e-Service development by using the UN e-Government Index
	Best Practice of Korea's e-Service : Health Care
	e-Service Practice with WordPress: Session 1, 2
	Best Practice of Korea's e-Service : Women's Economic Participation
Action Plan Workshop (Research, Discussion, Presentation)	Country Report Presentation
	Presentation of Local Research : Session 1, 2
	[Action Plan] Orientation & Grouping
	Core Components for ASEAN e-Service Development: Group Discussion
	Core Components for ASEAN e-Service Development: Group Presentation
	[Action Plan] Discussion by Country 1, 2
	[Action Plan] Final Review
	Action Plan Presentation



Development and Delivery of Livelihood-Based e-Service for ASEAN Women



2. Study Visit

- **Organization : Gyeonggi Women's Development Center (GWDC)**

Gyeonggi Women's Development Center (GWDC) is a nationally and internationally recognized nonprofit organization that was established by Gyeonggi Provincial Government to empower women through integrated training and support programs.

Over the past 15 years, GWDC has become a leader in providing a wide range of innovative programs designed to promote competent, responsive and creative leaders.

GWDC's programs and services are so well recognized that other organizations across the nation have took GWDC as a model for their own efforts.

(Website: <http://www.womenpro.go.kr/en/enindex.do>)

Vision of Center
Women:
Empowering the world and the future

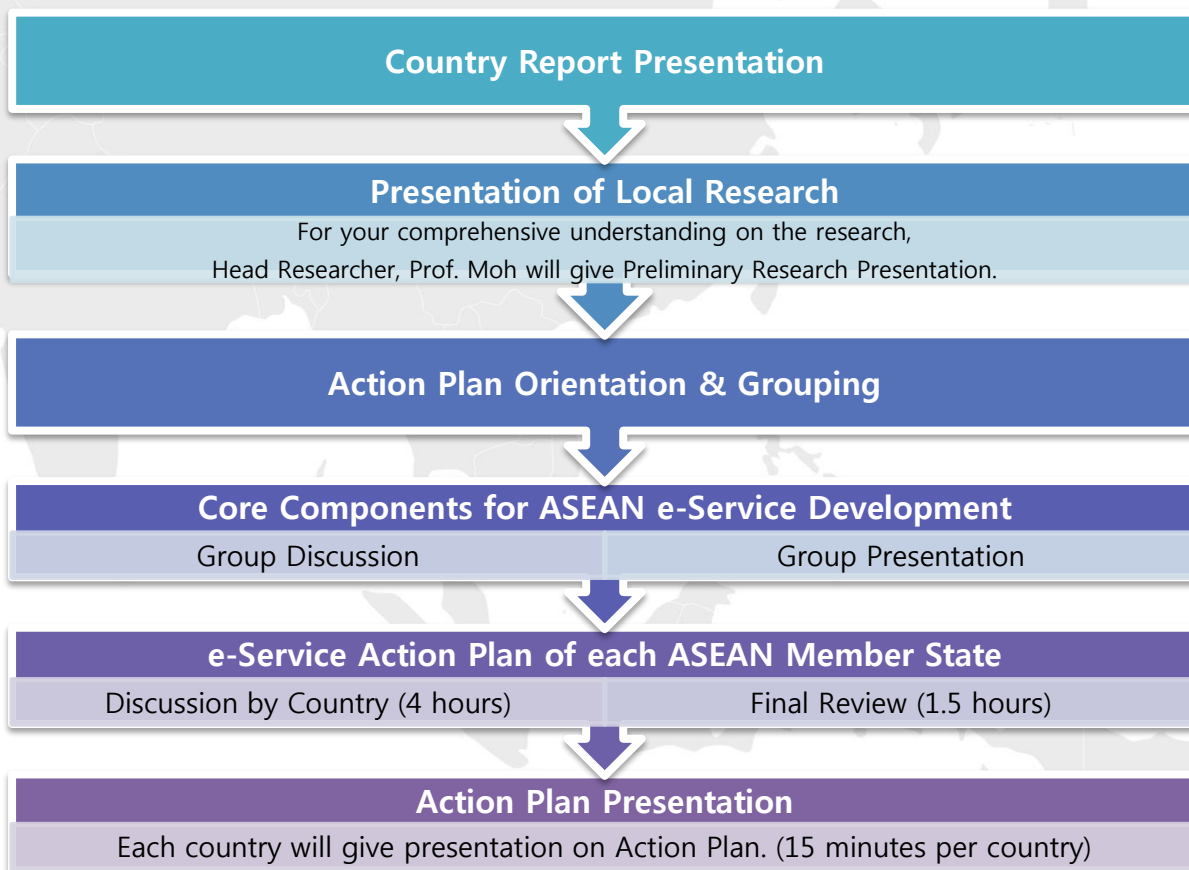
For the past decade, Gyeonggi Women's Development Center has adamantly strived for one goal; to guide women along the path to empowerment by laying the foundation to realize their aspirations through the maximization of their potential.

And now it's time for us to move beyond the boundaries of the nation to make a better tomorrow with brave women all around the world. Women who are not afraid to face challenges, women who can reach out to the underprivileged, women who possess vision and vigor, can change the world.



III. GUIDELINES FOR ACTION PLAN

1. Progress Chart of Action Plan Workshop



2. Tasks for the Action Plan Preparation

The e-Service Development Workshop for ASEAN Women includes a 'Country Report' session and a 'Presentation of Local Research' session where participants have an opportunity to analyze each country's current status and circumstances in the program subject and share it with other participants and Korean experts. These aim to provide appropriate solutions and insights to the identified problems and issues of their countries.



Development and Delivery of Livelihood-Based e-Service for ASEAN Women



The Presentation should be prepared in MS PowerPoint format and the report should be written in English only. For more effective presentations, necessary equipment such as a projector will be available. The presentation file should be submitted before the given due date.

- **Country Report Presentation (15 minutes per Country including Q&A)**

The Country Report will be prepared and conveyed by the public official participants in each country.

<Presentation Contents>

- 1) Brief Introduction of the Country (including statistical data)
- 2) UN e-Government Index of the Country
 - Based on the UN e-Government Index report, what are the distinct characteristics in your country?
 - Or what are the major problems in your country?
- 3) Country's e-Government or e-Service related Policies, Programs and Plans
 - Describe the current national/local/institutional level of policy or educational programs for e-Service.
 - Which information is available by which institute(s)?

- **Presentation of Local Research (30 minutes per Country including Q&A)**

The Local Research Presentation will be prepared and performed by the local researcher participants who conducted 'Country-wise Analysis' at the Preliminary Research which is previous stage for the project.

<Presentation Contents>

- 1) Introduction of Three e-Service Cases (based on the local research)
- 2) Country Specific Demand for e-Service (based on the Survey Result Analysis)
- 3) Future Directions of e-Service

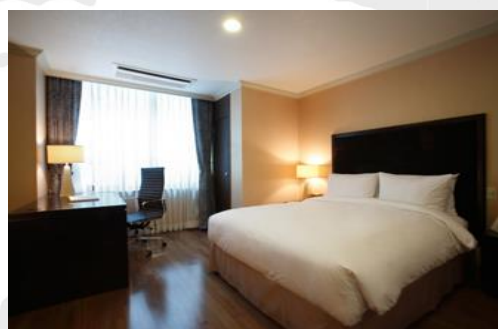


IV. ACCOMMODATION

Participants will lodge at the Ramada Hotel & Suites, Seoul Namdaemun. No individual reservations are needed as block reservation has been already made by APWINC. Participants will share a twin room with one roommate.

Ramada Hotel & Suites, Seoul Namdaemun

- Ramada Hotel & Suites, Seoul Namdaemun is located in the center of Seoul as a business hotel close to City Hall and famous shopping area MyungDong. It has large guest rooms and some rooms have dining service equipment for longer staying guest. Every room has personal control system of air-conditioning and heating. All rooms feature LCD TVs with free movies and international TV channel.



Tel: 82-2-2119-8900

Fax: 82-2-2119-8989

Email: ryanmin@ramadapnp.com

Website: <http://www.ramadapnp.com>

Address: Chilpae-ro 27, Jung-gu Seoul, 100-130 KOREA

CHECK-IN from 2pm / **CHECK-OUT** by 12pm (noon)



Development and Delivery of Livelihood-Based e-Service for ASEAN Women



- Guests of the hotel may leave their belongings to the hotel if you arrive before the check-in time. However, entering the room would be allowed only after 2pm.
- **Hotel Services & Amenities**

<ul style="list-style-type: none">- 32 or 40 Inch TV with Direct TV- Baby Sitting Service available upon request- Baggage Handling : free of charge- Electric Kettle- Clock/Radio- Computer (only at the lobby)- Crib - Free- Dry Cleaning - charge- Elevators- Exercise Room with TV and Treadmill (with charge)- Free Newspaper upon request- Free Parking - in house guests only- Breakfast included- Hairdryer- High Speed Internet Access- Free WIFI in Room and Lobby	<ul style="list-style-type: none">- Indoor Parking : in house guests only- In Room Safe- Limousine Service Available (with charge)- Message Alert- Multi-Lingual Staff : English/Japanese- No Pets Allowed- Non Smoking Rooms available upon request- Public Transportation available- Refrigerator in some rooms- Suites Available- Wake Up Service- Wheel Chair Access- Tea Table- Mobile phone with fee- Electric Power: 220 volts* If your appliances do not use 220 volts, you need to bring your own transformer.
--	--



V. TRANSPORTATION

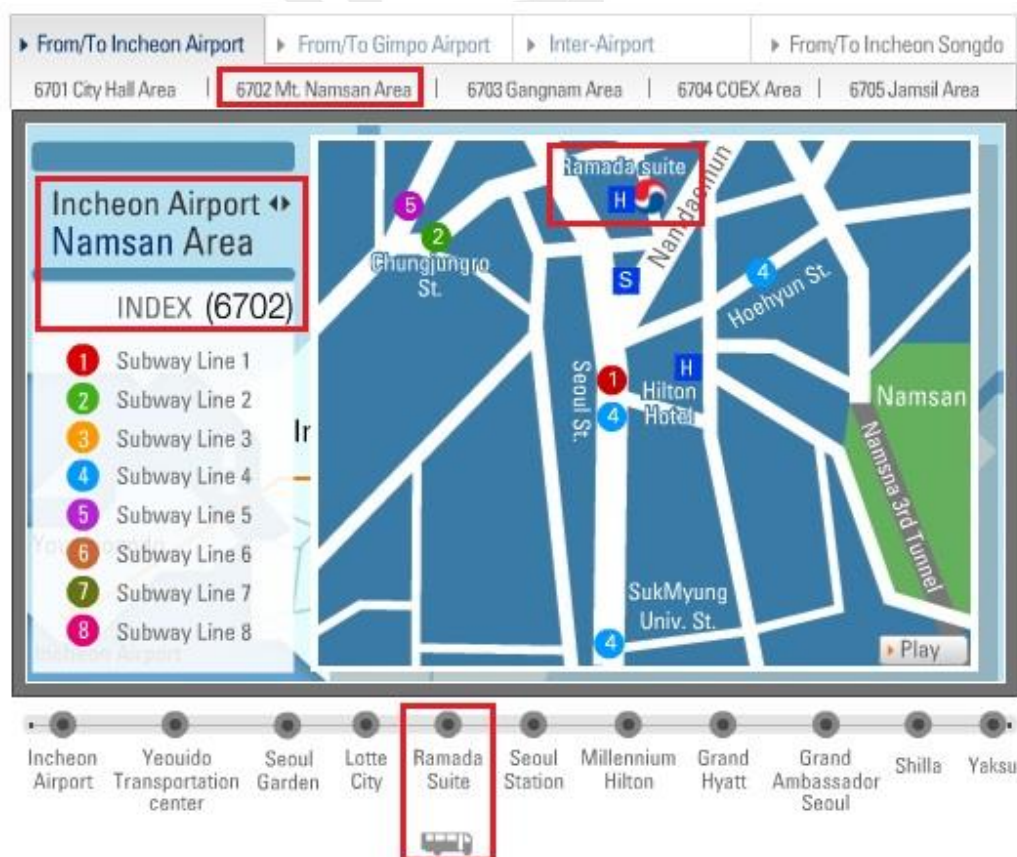
1. From Incheon Airport to Ramada Hotel & Suite, Seoul

Namdaemun

- **Bus:** KAL Limousine (Bus number 6702: heading to Namsan Area/ Route2)
- **Location of bus stop:** Bus Stop No. 4B or 11A (1st Floor)
- **Ticket purchase:** KAL Limousine counter (No.22)/ KAL Limousine bus stop
- **Fare:** KRW16,000 Won for Adults
- **Journey time:** about 60-70 minutes

***Ramada Hotel & Suites is the 4th bus stop from the airport.**

http://www.kallimousine.com/eng/guide01_en.html#lost (◀Find out Route2 here!)





Development and Delivery of Livelihood-Based e-Service for ASEAN Women



- **Time Table** of KAL Limousine from Incheon Airport to Ramada Hotel & Suites, Seoul Namdaemun

Departure Point

Incheon Airport (Bus Stop #4B)

Arrival Point

Ramada Hotel & suites

Please be advised that actual times may vary depending on traffic conditions.

Travel Time : 60~70min

Departure time

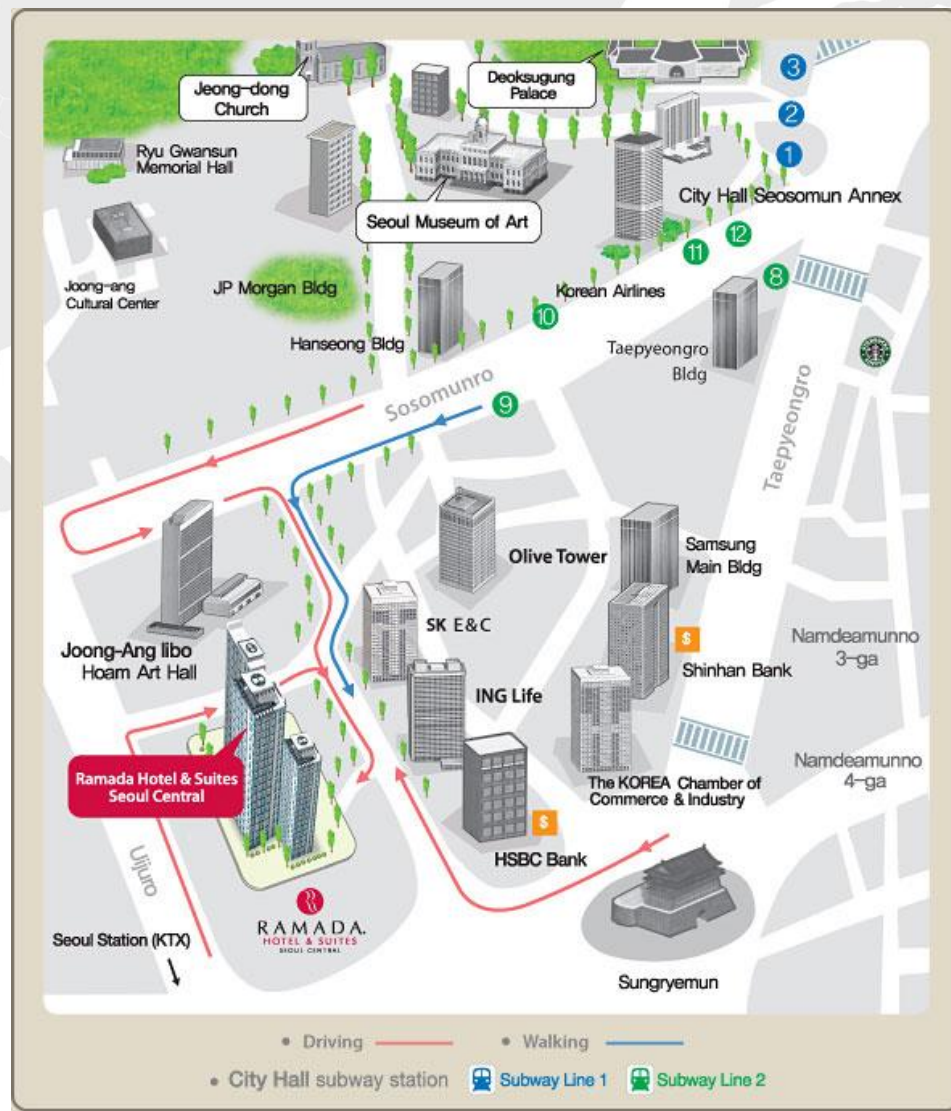
05:10	05:41	06:16	06:55	07:25	07:53
08:25	08:52	09:23	09:50	10:12	10:33
11:06	11:35	12:11	12:33	12:51	13:11
13:39	14:03	14:40	15:10	15:49	16:15
16:49	17:20	17:50	18:18	18:55	19:28
20:00	20:38	21:20	22:00	22:40	



Development and Delivery of Livelihood-Based e-Service for ASEAN Women



2. From Subway Station 'City Hall' to the Hotel





VI. EXPENSES AND ALLOWANCE

ASEAN-ROK Special Cooperation Fund will bear the expenses related to the implementation of the course, incurred during the workshop.

These expenses include:

- A normal economy class round-trip air ticket between Korea and the state of your departure.
- Accommodation (twin room) upon arrival and departure from Korea
- Per diem covering meals, transportation and all other incidental expenses (subject to change)
 - KRW 25,000 X 10 days of workshop = KRW 250,000
(The cost of round trip ticket for KAL Limousine is included in the per diem.)
 - Meals on Sep. 22 and Oct 1 upon your flight schedule

VII. PERSONAL BELONGINGS AND CHECKLIST

- Passport and visa, the letter of invitation
- Flight ticket (e-ticket)
- Money for incidental expenses
- Clothes
- Medicine (if taken regularly)
- Course Information
- Business Cards
- Own Laptop
- Boarding passes used on the way to Korea
- Enthusiastic Heart for Workshop



VIII. GENERAL INFORMATION

1. Workshop Institution

- Sookmyung Women's University

Sookmyung Women's University, which was founded in 1906 as the nation's first private women's university under the royal patronage, is preparing to take a new leap under the educational objective of fostering Creative Leaders with Power of Thinking among Sookmyung students.



The knowledge based society of the 21st Century demands a new paradigm for the pursuit of mutual prosperity. We are at the era when the human focused value needs to be restored; such value should be based on the humanism and understanding of different cultures. In line with such transformation of value, Sookmyung endeavors to nurture the



Sookmyung was the first Women's University opened female reserve officers program

right culture and character in our students through administering strengthened liberal arts education. We also strive to develop accomplished intellectuals by facilitating academic as well as personal exchanges between faculty and students.

Sookmyung has pioneered in introducing PBL(Problem Based Learning) and UL(Ubiquitous Learning) method to students; their problem solving and information search capacity have been cultivated throughout. At the same time, we aim to expand the horizon of students' global outlook and experience by fostering the exchange programs with our world renowned foreign educational partners. In addition, we



Development and Delivery of Livelihood-Based e-Service for ASEAN Women



enhance our globalization process by strengthening the exchange relations with reliable overseas public organizations or corporations. We are also implementing a tailor made globalization of each college according to the particular needs of its students and faculty as well as its characteristics.

Sookmyung began in 1906



During the reign of Emperor Gojong, Empress Sunhen, perceiving the critical need for women's education for the sake of the nation's survival in time of difficulty, established Myungsin Girl's School, the nation's first educational institution for women. Later, the school evolved into Myungsin Girl's High School, then Sookmyung Women's Junior College in 1938, and finally

Sookmyung Women's College in 1948. In 1955 Sookmyung Women's College grew into Sookmyung Women's University and has continued its name and tradition since then.

Declaration of the 'Second Founding' in 1995

With a goal of 'Beyond Women, Toward Leaders, Beyond Korea, Toward the World', the university declared its 'Second Founding' and has played a leading role in providing a fertile ground for women's leadership education. In 2005, the ten-year anniversary of the declaration of the 'Second Founding', the university announced 'SM VISION 2020', a vision to transform the university into a world class women's university as well as the world's best leadership oriented university.





Development and Delivery of Livelihood-Based e-Service for ASEAN Women



Facts about SMU

- **Founded in:** 1906 by the Queen Sunhun of late Chosun Dynasty
- **Type :** Private University located in Metropolitan City of Seoul
- **President:** Dr. Sun Hye Hwang
- **Number of Students (as of Jan. 2014):**
 - Undergraduate: 13,227 students with 166 International Students
 - Master & Ph.D: 3,086 students with 184 International Students
- **Number of Faculty Members:**
 - 1,652 Professors with 57 foreign faculty
- **Undergraduate Programs :** 9 Colleges & 3 Independent Schools
 - College of Liberal Arts
 - College of Science
 - College of Pharmacy
 - College of Human Ecology
 - College of Social Sciences
 - College of Law
 - College of Economics & Business Administration
 - College of Music
 - College of Fine Arts
 - School of Global Service
 - School of English
 - School of Communication & Media
- **Graduate Programs :** 13 Graduate Schools
 - Graduate School
 - Graduate School of Professional Studies
 - Graduate School of Education
 - Sookmyung Hospitality Business School(SHBS)
 - Graduate School of Clinical Pharmacy
 - Graduate School of Public Policy and Industry
 - Graduate School of International Service
 - Graduate School of Distance Learning
 - Graduate School of Music Therapy
 - Graduate School of Traditional Culture and Arts



Development and Delivery of Livelihood-Based e-Service for ASEAN Women



Graduate School of TESOL

Graduate School of Life Style Design

Graduate School of Social Education

Graduate School of Human Resource Development for Women

· **Global Partners** : 43countries 267 universities

- **Asia Pacific Women's Information Network Center, Sookmyung Women's University (APWINC)**

- Asia Pacific Women's Information Network Center (APWINC) was established in November 1996 at Sookmyung Women's University in order to promote gender equality and empowerment for women through advancing women's potential and skills in the field of information and Communication Technology (ICT) in the Asia Pacific region. APWINC has made various efforts to play a pioneer role for women's informatization by conducting researches and field surveys, education and trainings, as well as conferences, workshops, and seminars in Gender and ICT.
- APWINC has been serving as the Institution for UNESCO Chair in Communication Technology for Women since 1998.
- APWINC collaborates with international organizations (ITU, UNESCO, UNESCAP, UNDP, IDB, WORLD BANK and WIPO), governmental organizations (ASEAN, APEC) and international NGOs (APCWNSP, WomenAction, and BPW) to develop ICT-related projects for women.



Development and Delivery of Livelihood-Based e-Service for ASEAN Women



- Location map of the workshop venue, Sookmyung Women's University, Seoul.



- Centennial Hall of Sookmyung Women's University is on the left in the picture below.





2. About Korea and City Seoul

● Korea Today

The Korean Peninsula is divided between north and south, making Korea one of the only divided countries in the world. The following information is about the Republic of Korea.



[Clockwise from the upper left: Korea's spring, summer, fall, and winter landscapes]

Korea has four distinct seasons, each with their own stunning scenes. In the spring, forsythia, cherry blossoms, azaleas and many other flowers are in full bloom; in the summer, vacationers head to the coasts to enjoy time at the beach; autumn brings crimson colors to mountain foliage, and in the winter, land is covered with a blanket of white snow.

The capital of Korea is Seoul, and the government is led by President Park Geun-hye, elected in 2013 as the country's first woman president.



Development and Delivery of Livelihood-Based e-Service for ASEAN Women



The Korean economy is driven by the manufacturing and exports including ships, automobiles, mobile phones, PCs, TVs, and a wide range of other electronics. Korea has enjoyed rapid economic growth thanks in large part to its export-focused strategy. In 2013, Korea's GDP was USD\$1.19 trillion based on IMF statistics. The nation boasts the world's 15th-largest economy (IMF 2013). Recently, Korean dramas and movies are also widely exported thanks to the popularity of Korean pop culture. K-pop stars are also active on the world stage.

The country's population reached 51.20 million in April 2014 (Ministry of Security and Public Administration), with a large proportion living in major metropolitan areas. To address congestion in the Seoul and its satellite cities where around half the country's population resides, the Korean government is relocating many government organizations to locations outside of the capital city, with the process set to be completed in 2014.

- **People**

Koreans are largely ethnically homogenous and have their own form of writing called Hangeul. Born with Mongolian spots, Koreans are believed to be descendants of several Mongol tribes that migrated to the Korean Peninsula from Central Asia.



[Jeondong Catholic Church (left) & Bulguksa Temple [UNESCO World Heritage] in Gyeongju (right)]



Development and Delivery of Livelihood-Based e-Service for ASEAN Women



In ancient times, Koreans believed in shamanism, a primitive form of religion that has deep roots in folk beliefs. With the introduction of Buddhism to the Goguryeo Kingdom in 372 A.D., Buddhism began to flourish in Korea. As a result, there are many old Buddhist buildings and sculptures located throughout the Korean Peninsula. Some of the most well-known include Haeinsa Temple, which houses the Tripitaka Koreana (a collection of Buddhist scriptures carved on over 80,000 woodblocks; UNESCO's Memory of the World), Seokguram Grotto (UNESCO World Heritage), and Bulguksa Temple (UNESCO World Heritage) in Gyeongju.

Christianity first reached Korea around the 18th century, and the number of Christians has rapidly increased since then.



[Photos Korean celebrities displayed inside the Tourist Information Center of Korea Tourism Organization]

The most notable Korean figures in 2013 were Park Geun-hye, Korea's first female president, Psy, who became a worldwide celebrity thanks to his song "Gangnam Style", and Kim Yuna, who won gold medals at the 2010 Vancouver Winter



Development and Delivery of Livelihood-Based e-Service for ASEAN Women



Olympics and 2013 World Figure Skating Championships with her unrivaled figure skating skills.

Also, the recent Hallyu (Korean Wave or the popularity of Korean pop culture) boom has helped popularize K-Pop stars such as Girls' Generation, and SHINee, and actors like Kim Su-hyeon, and Song Joong-ki, but these are just a few of the many Korean celebrities who are gaining immense popularity around the world

From: Official Site of Korea Tourism Org.

(http://asiaenglish.visitkorea.or.kr/ena/AK/AK_EN_1_4_4.jsp)

● SEOUL

Located at 126 59' E and 37 34' N, Seoul is at the heart of the Korean Peninsula. The city is nearly equidistant from the southeastern port of Busan and the northwestern town of Sinuiju on the China-North Korea border. The city is also conveniently located in the middle of several major northeast Asian metropolises, such as Tokyo, Beijing, Shanghai and Taipei. The city is some 30.3 km from north to south and 36.78 km east to west. Its total area is 605.41 square kilometers, making it a truly large metropolis.



Seoul sits in a natural basin. Surrounding the city are a number of peaks of 500 meters or more above sea level. These peaks have historically played the role of a natural fortress, providing the city with protection from invasion. In fact, the mountains were a key reason behind the location's selection as the national capital.



Development and Delivery of Livelihood-Based e-Service for ASEAN Women



● Weather & Clothes

- Korea has four seasons, with a wet monsoon/summer in the middle of the year, and a cold winter from November to March. The island of Jeju off the southern coast is the warmest and wettest place in Korea. The most ideal time to visit Korea is during the autumn months (September~November). During this time, Korea experiences warm, sunny weather, skies that are cobalt blue and spectacular foliage that is perhaps the biggest draw. Winters are cold and dry and remain a good time if you are interested in winter sports as there are numerous ski resorts. Spring (April~May) is also beautiful with all the cherry blossoms in bloom. However, it is very busy and one needs to book in advance to ensure accommodation is available. The summer months are muggy and hot, and rather crowded. It is also when the monsoon begins so many activities are subject to the fluctuations of heavy rain.

Month	Average temperature(°C)	Clothes
JANUARY	-2.0	Winter coat, sweater, gloves
FEBRUARY	2.9	
MARCH	6.0	Long-sleeved shirt, spring jacket
APRIL	12.7	
MAY	19.1	
JUNE	22.4	Half-sleeved shirt, summer clothes, umbrella
JULY	24.3	
AUGUST	25.7	
SEPTEMBER	21.8	Long-sleeved shirt, autumn jacket
OCTOBER	16	
NOVEMBER	6.9	Jumper, jacket, winter clothes
DECEMBER	0.4	



Development and Delivery of Livelihood-Based e-Service for ASEAN Women



- ✓ Business or formal clothes are recommended for official ceremonies (Closing and Opening ceremonies).
- ✓ Please visit (<http://www.kma.go.kr>) for detailed weather updates.

- **Consumer Prices In KOREA**

Major credit cards are also acceptable at most hotels and restaurants. Currency exchange offices are located in local banks, at airports and at hotels. Most offices are open 9 am to 6 pm from Monday to Friday. Banks are from 9 am to 4 pm on weekdays. Buses and vending machines may only accept 1,000 won bills and coins.

The unit of Korean currency is won (KRW) (USD≐1,034 won/ as of Sep, 2014)

- Subway/Bus: 1,150won (KRW) ~ (≐USD1.11)
- Taxi: 3,000won (KRW) ~ (≐USD2.90)

※ For more detailed information, please visit: [Official Site of Korea Tourism Org.: Money&Currency](http://asiaenglish.visitkorea.or.kr/ena/AK/AK_EN_1_5_4.jsp) (http://asiaenglish.visitkorea.or.kr/ena/AK/AK_EN_1_5_4.jsp)



IX. CONTACT INFORMATION

Asia Pacific Women's Information Network Center (APWINC)

- **Ms. Ji Hye Lee** (Researcher, Division of International Cooperation)
 - **Phone:** +82-2-710-9886
 - **Mobile:** +82-10-4445-5350

- **Ms. Jihee You** (Researcher, Division of International Cooperation)
 - **Phone:** +82-2-710-9895
 - **Mobile:** +82-10-8803-4113

- **Fax:** +82-2-710-9351
- **E-mail:** apwinc@sm.ac.kr
- **Home page:** <http://www.women.or.kr>



ANNEX. LIST OF PARTICIPANTS

No	Country	Name	Present Position	Name of Company/ Organization
1	Brunei	Sophiana Chua Abdullah	Researcher	Centre for Strategic & Policy Studies
2		Norliah HJ MD Ali	Head of Information and Data Section	Community Development Department
3	Cambodia	Sovanneary Huot	National Sociologist/ Community Facilitator	Emergency Food Assistance Project
4		Sineth Seng	SEAMEO Officer	Department of Information and ASEAN Affairs, Ministry of Education, Youth and Sport
5	Indonesia	Prita Ismayani Srwidyarti	Sub Division Head of Information and Documentation	Ministry of Empowerment of Women and Child Protection
6		Indah Lukitasari	Website Administrator	Ministry of Women Empowerment and Child Protection
7	Lao PDR	Phoutsady Souvathdy	Technical Official	Lao Women Information Department, Lao Women's Union
8		Phetyasone Xaypanya	Co-director	Social Development Alliance Association (SODA)
9	Malaysia	Siti Fatimah Khairiah M.Amin	Information Technology Officer	Ministry of Education, Malaysia



Development and Delivery of Livelihood-Based e-Service for ASEAN Women



No	Country	Name	Present Position	Name of Company/ Organization
10	Myanmar	Kyawt Kyawt Khaing	Trainer Researcher	Myanmar Development Resource Institute – Centre for Strategic and International Studies
11		Pwint Phoo Lwin	Social Welfare Junior Officer	Department of Social Welfare, Ministry of Social Welfare, Relief and Resettlement
12	Philippines	Karen Beloso Brutas	Researcher	Women and Development Studies, College of Social Work and Community Development, University of the Philippines
13		Cyrus Kim Diaz Bautista	Media Production Specialist III	Department of Trade & Industry
14	Singapore	Boey Lin Fong	Consulting Director	Integral Solutions(Asia) Pte Ltd
15	Thailand	Kamolrat Intaratat	Associate Professor	Sukhothai Thammathirat Open university : Research Centre of Communication and Development Knowledge Management (CCDKM),
16		Somsri Chongpensuklert	Social Development Worker, Professional level	Office of Women's Affairs and Family Development



Development and Delivery of Livelihood-Based e-Service for ASEAN Women



No	Country	Name	Present Position	Name of Company/ Organization
17	Vietnam	Nguyen Thi Thu Huong	Head of Scientific Administration Division	Ministry of Labor- Invalids and Social Affairs
18		Tran Tuan Cuong	Head of External Information Division	Ministry of Labor- Invalids and Social Affairs